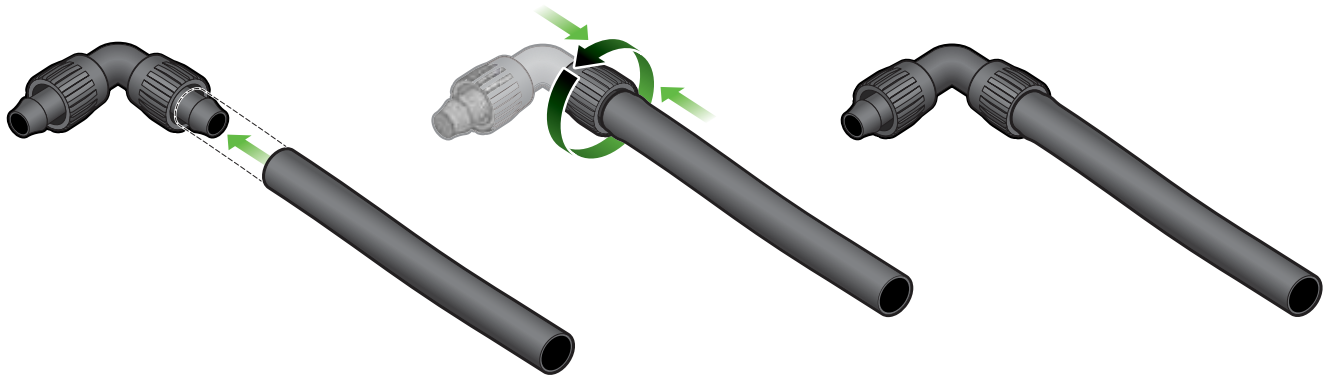


Power-Loc Fittings

Size Selection Chart—Nominal Tubing Size

Fitting Series Number	Acceptable I.D.		Acceptable Wall Thickness	
	Inches	Millimeters	Inches	Millimeters
50	0.500 to 0.580	12.7 to 14.7	0.035 to 0.055	0.89 to 1.40
55	0.520 to 0.620	13.2 to 15.7	0.045 to 0.055	1.14 to 1.40
60	0.580 to 0.675	14.7 to 17.1	0.025 to 0.055	0.64 to 1.40
70	0.665 to 0.765	16.9 to 19.4	0.035 to 0.055	0.89 to 1.40
80	0.790 to 0.845	20.1 to 21.5	0.045 to 0.065	1.14 to 1.65
100	1.035 to 1.075	26.3 to 27.3	0.062 to 0.075	1.57 to 1.91

FITTINGS



Model #	Part #	Description	Bag Qty.	Box Qty.	Box Wt.	Box Code	Stock Code
Power-Loc Coupling							
PL-50-PC	12050005		25	650	26.8	A	
PL-55-PC	72050305		25	500	26.8	A	
PL-60-PC	12050105		25	500	26.8	A	
PL-70-PC	12050205		25	400	28.1	A	
PL-80-PC	12050607		25	300	16.0	A	
PL-100-PC	12050611		25	175	24.0	A	
Power-Loc Tee							
PL-50-P3T	12050001		25	325	17.3	A	
PL-55-P3T	72050301		25	250	17.3	A	
PL-60-P3T	12050101		25	250	18.0	A	
PL-70-P3T	12050201		25	225	18.0	A	
PL-80-P3T	12050616		25	150	30.0	A	
PL-100-P3T	12050619		10	90	30.0	A	
Power-Loc x 3/4" FH Swivel Tee with Washer							
PL-50-PST-WW	12050002		25	350	14.8	A	
PL-55-PST-WW	72050302		25	250	14.8	A	
PL-60-PST-WW	12050102		25	250	10.0	A	
PL-70-PST-WW	12050202		25	225	10.0	A	
PL-80-PST-WW	12050600		25	175	11.0	A	



PL-50-PC



PL-50-P3T



PL-50-PST-WW