

# Steel Weld-on Flanges

## Features:

- Weld-on Carbon Steel (A-36 or A283-C Plate)
- Polyurethane Coating (to avoid rust)
- Self-centering disc
- Mil Finish Plate x Machined Facing (125-250rms)
- 1/2" Thick
- #150 PSI Test
- Full Face
- Standard Bolt Holes
- 1/16" Thick Flange Gasket Included



## Other Flanges Available:

- Cast Aluminum
- Blind Steel
- Female Threaded Cast Iron
- Square Steel

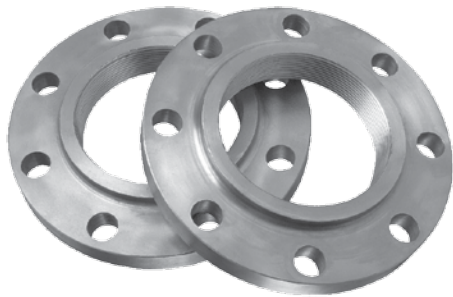
Size	Part #	Thickness	Weight	ID	OD	Bolt Circle	# of Holes	Hole Size	Bolt Size
2"	6-1104	1/2"	3.5	2-1/16"	6"	4-3/4"	4	3/4"	5/8"
2-1/2"	6-1105	1/2"	4.5	2-9/16"	7"	5-1/2"	4	3/4"	5/8"
3"	6-1106	1/2"	5.3	3-1/16"	7.5"	6"	4	3/4"	5/8"
4"	6-1107	1/2"	6.9	4-1/16"	9"	7-1/2"	8	3/4"	5/8"
4-1/2" IPS Size	9-6915	1/2"	6.9	4.57"	9"	7-1/2"	8	3/4"	5/8"
5"	6-1108	1/2"	8.0	5-1/16"	10"	8-1/2"	8	7/8"	3/4"
6"	6-1110	1/2"	9.0	6-1/16"	11"	9-1/2"	8	7/8"	3/4"
6-5/8" IPS Size	6-9674	1/2"	9.0	6.72"	11"	9-1/2"	8	7/8"	3/4"
6" For Valve Outlet	6-9678	1/2"	9.0	8-1/16"	11"	9-1/2"	8	7/8"	3/4"
8"	6-1111	1/2"	12.6	8-1/16"	13.5"	11-3/4"	8	7/8"	3/4"
8-5/8" IPS Size	6-9675	1/2"	12.6	8.72"	13.5"	11-3/4"	8	7/8"	3/4"
8" For Valve Outlet	6-9679	1/2"	12.6	10-1/16"	13.5"	11-3/4"	8	7/8"	3/4"
10"	6-1112	1/2"	16.3	10-1/16"	16"	14-1/4"	12	1"	7/8"
10-3/4" IPS Size	6-9676	1/2"	16.3	10.88"	16"	14-1/4"	12	1"	7/8"
10" For Valve Outlet	6-9680	1/2"	16.3	12-1/16"	16"	14-1/4"	12	1"	7/8"
12"	6-1109	1/2"	22.5	12-1/16"	19"	17"	12	1"	7/8"
12-3/4"	6-9677	1/2"	22.5	12.88"	19"	17"	12	1"	7/8"
12" For Valve Outlet	6-9681	1/2"	22.5	14.13"	19"	17"	12	1"	7/8"
14"	8-1440	1/2"	26.5	14.13"	21"	18-3/4"	12	1-1/8"	1"
16"	8-1441	1/2"	31.0	16.13"	23.5"	21-1/4"	16	1-1/8"	1"
18"	8-1442	1/2"	32.0	18.13"	25"	22-3/4"	16	1-1/4"	1-1/8"
20"	8-1443	1/2"	37.5	20.13"	27.5"	25"	20	1-1/4"	1-1/8"
22"	8-1444	1/2"	38.5	22.13"	29.5"	27-1/4"	20	1-3/8"	1-1/4"
24"	8-1445	1/2"	51.0	24.13"	32"	29-1/2"	20	1-3/8"	1-1/4"



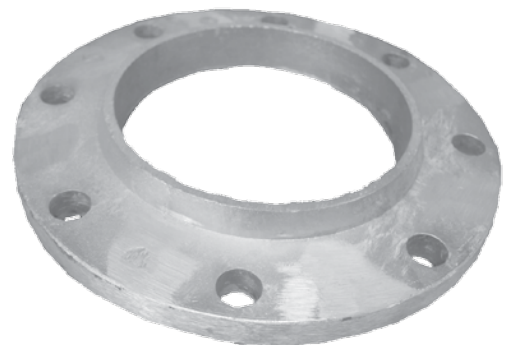
**Blind Steel Flange**



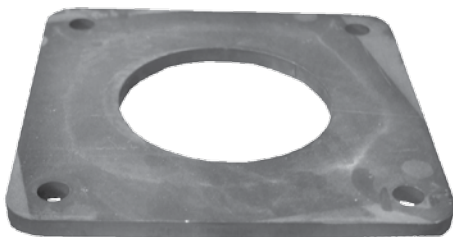
**Black Steel Flange**



**Female Threaded Cast Iron Flange**



**Cast Aluminum Flange**



**Square Flange**

### **Flange Insulation Kit:**

This cathodically insulated kit prevents stray currents which cause undue corrosion and eventual breakdown of the metal. Also prevents leakage. Kit includes:

- Nitrile-Face Phenolic Full Face Flange Gasket
- Mylar Sleeves
- Phenolic Washers
- Steel Washers
- Bolts & Nuts NOT included

