

Since 1956

SCHUMACHER

IRRIGATION, INC.

Irrigation & Liquid Handling Solutions

Aluminum Pipe

Aluminum pipe is lightweight, portable, and easy to move. The pipe is coupled together with a variety of connection couplers, including welded, pressed, or bolted. The pipe is also available in a number of different wall thicknesses to accommodate low, medium to high pressures. Ideal for use in agricultural irrigation, construction, and industrial markets.

Applications:

- Irrigation
- Construction
- Waste Water
- Mining
- Environmental
- Temporary sewer bypass

Connection Types:

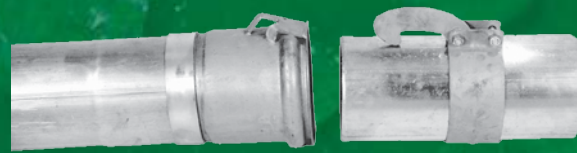
- High Pressure Ringlock
- Medium Pressure Band & Hook
- High Pressure Twist Lock
- Handmove Sprinkler Lines
- Low Pressure Plain End Mainline
- Alum Gated/Flood
- Ball & Socket for Discharge or Suction

Mainline Pipe Pressure Rating

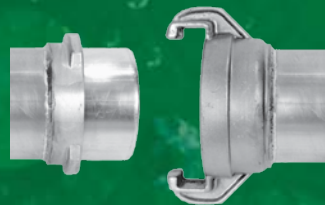
Type	Size	Wall Thickness	Pressure (psi)
Band & Hook	4"	0.051	120
Band & Hook	6"	0.051	100
Band & Hook	8"	0.051	70
Band & Hook	10"	0.051	60
Ringlock Standard Wall	6"	0.051	125
Ringlock Standard Wall	8"	0.051	90
Ringlock Standard Wall	10"	0.051	70
Ringlock Heavy Wall	6"	0.064	150
Ringlock Heavy Wall	8"	0.064	150
Ringlock Heavy Wall	10"	0.064	125
Twist Lock	4"	0.051	150
Twist Lock	5"	0.051	150
Twist Lock	6"	0.064	150
Twist Lock	8"	0.064	125



Ringlock



Band & Hook



Twist Lock



Sprinkler



Plain End



Bauer Style
Ball & Socket



Gated

USED Aluminum Pipe

Schumacher Irrigation sells USED aluminum irrigation pipe and fittings. Pipe sizes ranging from 2" to 12" in sprinkler, mainline, and flood irrigation pipe. The updated USED pipe inventory available on-line:

www.schumacherirrigation.com/usedpipe.asp

