



**Big Red Tow  
No. 1**



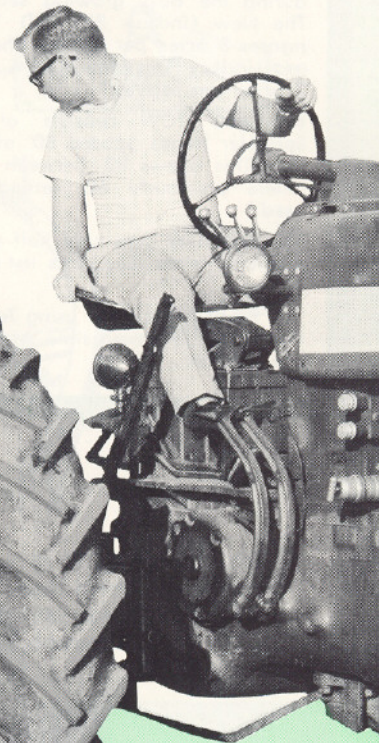
**SCHUMACHER**  
IRRIGATION INC.

MANUFACTURERS OF

*Lindsay* "Quick-Tach" Tow-Move

Patent No. 3376052

**Irrigation  
System**



**NOW...Two Water Patterns Available  
Standard 40'x60' and 80'x90' Wide Pattern  
Cuts One-Third of Tow Line Labor Costs!**



# Light in Weight . . . Easier

## 8 CONSTRUCTION FEATURES THAT MAKE IT QUICK-TACH SUPERIOR TO COUPLERS

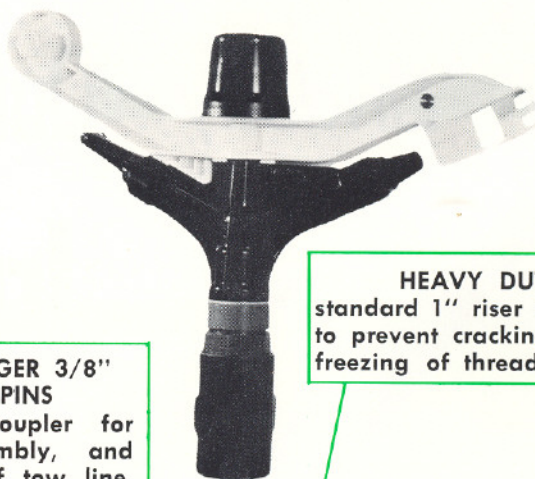
### NEW BIG RED TOW SAVES TIME And LABOR

Lindsay has come up with another first to save the irrigation farmer time during the busy growing season. The New Lindsay BIG RED TOW irrigates 3 acres per setting. The standard Lindsay Tow-Line system irrigates 2 acres per setting.

BIG RED TOW consists of larger Sprinkler Heads spaced 80' along the line. This allows 90' between settings where previously 60' settings were used.

BIG RED TOW uses only half as many sprinkler heads (See parts list on back page.)

You cover more acres using less labor than ever before possible with a tow line system.



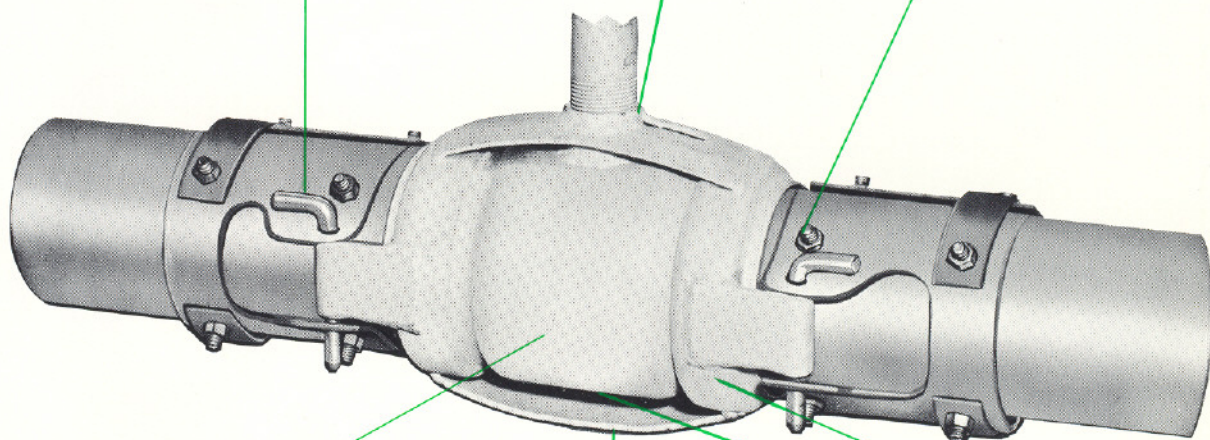
**NO END HITCH**  
Sturdy 4" tow plug is used in coupler in the line, and No other end hitch or a

#### FOUR LARGER 3/8" STEEL PINS

In every coupler for faster assembly, and detaching of tow line. Lengthen line or shorten line in seconds . . . no wrenches or tools needed.

**HEAVY DUTY RISER OUTLET**  
standard 1" riser outlet, heavily reinforced to prevent cracking loose. Also eliminates freezing of threads to risers in outlet.

**EIGHT BOLTS FOR**  
Two half-moon clamps on coupler, with eight bolts for are evenly spaced so tubing to have four wearing side



**LIGHT BUT STURDY STEEL**  
Light gauge steel coupler will take the ruggedness of a hard pull under rough conditions, yet is light enough to pull easily. This is a full open external coupler, allowing the least possible friction loss.

**INTEGRAL SKID PAN**  
Welded to bottom of coupler, this 2 1/2" wide skid pan also acts as a deflector for drain valve to prevent washing away of crops.

**THREE DRAINS**  
One in center of coupler, and two at ends of coupler for line when flow of v



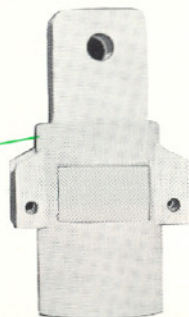
# to Move . . .

# Sturdy Cons

## MAKE LINDSAY COMPETITORS

## THE USERS TALKING. TH

**NECESSARY**  
designed to fit each  
also act as a hitch.  
Attachment is needed.



### TESTED AND PROVEN

#### MORE THAN FIVE THOUSAND SYSTEMS NOW IN USE!

The Lindsay System "Quick-Tach" has been tested in action, pulling as much as 1920 feet of four-inch lateral in one line, on a rolling farm. You can't beat it for convenience . . . you can couple . . . uncouple . . . make any length you wish in just a matter of minutes. Loose Coupler allows it to be taken free on both ends of the pipe, eliminating the damaging of risers when transporting from the field.

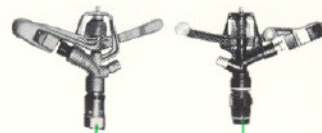
The above testimonials are just a few of the reasons why the Lindsay is fast gaining acceptance with irrigation farmers from North Dakota to Texas.

**STRENGTH**  
on both sides of  
strength. They  
can be turned  
s.

#### DOUBLE STRENGTH RISERS

Double Strength steel threaded ends are welded on (not pressed) to eliminate vibrating loose and reduce breakage. They are made of zinc-coated steel—a combination that brings the toughness of steel to the lightness of aluminum. The risers are available in many heights.

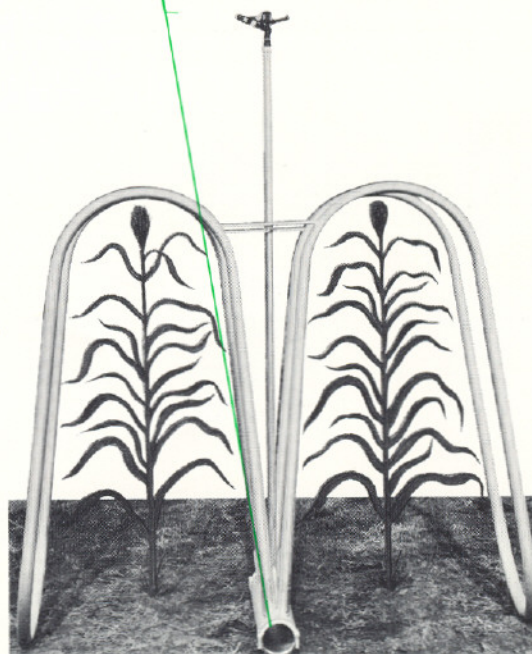
**SHUT OFF  
VALVES**  
One on each  
end of every  
line



**SPRINKLER  
HEADS**  
Plastic or Brass

#### FASTER COUPLING

Now Lindsay stabilizers hook to the pipeline with 4 pins, the same as the quick tach coupler has for years.



### Lindsay's "New" Quick Tach Stabilizers

Gone is the time consuming unbolting or unclamping the stabilizer from the pipe every time you move the line from the end of the field back to the beginning. Also allows moving from one field to another with least amount of labor. Lindsay builds three standard heights 5 ft.-3½ ft. and 6 ft. Many widths are available. These many heights and widths make it possible to straddle the rows or go between the rows in row crop farming.

**EVERY 40 FEET**  
coupler, and two heavy  
"gaskets in female  
or automatic drain of  
water is turned off.





# Construction . . . Economical . . .

## IF LINDSAY TOW LINES CAN'T QUIT THESE LETTERS ARE FURTHER PROOF OF LINDSAY'S SUPERIORITY



### " . . . I LIKE THE LINDSAY TOW LINE MUCH BETTER. . . "

Having bought two 1/4 mile tow lines this year I bought one Lindsay tow line and one of the competitors. I like the Lindsay tow line much better. Knowing what I know now I wish I would have bought both of them the Lindsay lines.

Henry Peach  
Monroe, Nebraska



### " . . . I LIKE MY LINDSAY TOW LINE MUCH BETTER THAN HANDMOVE. . . "

I think the Lindsay tow line has been the quickest-most labor saving irrigation system I have seen or have used myself. I have been more than pleased with its performance. I move two 1/8 mile tow lines in thirty minutes, this includes shutting the pump off and starting it again.

Wayne R. Martin  
Quinter, Kansas



### " . . . CHANGED FROM BOOM TYPE SPRINKLER TO LINDSAY TOW LINES. . . "

In 1970, I changed from boom type sprinkler to the LINDSAY tow line system. I like it so well that I put in another irrigation system for the 1971 crop year, and purchased LINDSAY tow lines.

What convinced me was the neighbor across the fence had three LINDSAY tow lines with the 80' x 90' spacings, and he moved the three lines in the same time it took me to reset the boom once. His total coverage with the three lines was 8 acres, where as, my one set was 2.5 acres.

Richard W. Curtis  
Monroe, Nebr.

# CUT LABOR COSTS

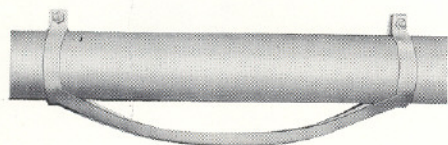
Comparative Moving Time					
	MINUTES PER ACRE				
	9	13	17	19	38
HAND MOVE					
TRAVELING GUN					
TOW LINE					
BIG RED					

University of Nebraska District Extension Irrigations report that labor usually equals about 30% of the total irrigation costs, making up the primary reason for development of mechanical and automated systems.

They cite a study of time required by three different methods for moving a quarter-mile sprinkler lateral. The hand move required 38 minutes per irrigated acre; the side roll (power move), 17 minutes per acre; and the tractor tow, 13 minutes per irrigated acre. BIG RED TOW cuts the time down to 9 minutes per irrigated acre.



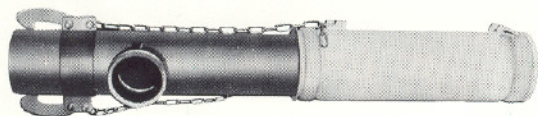
## Has All You Need To Complete An Irrigation System



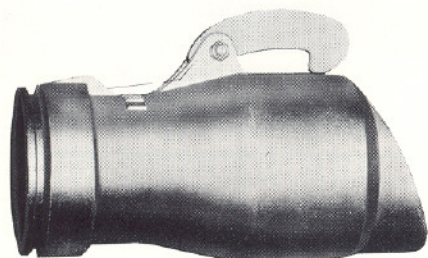
Center Carrier



End Tri-Pod and High Riser



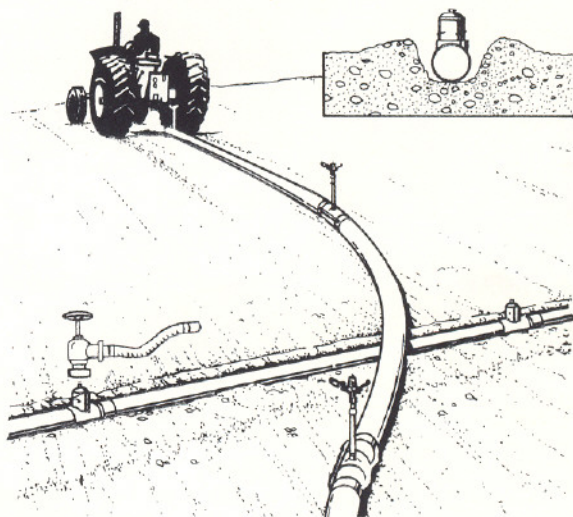
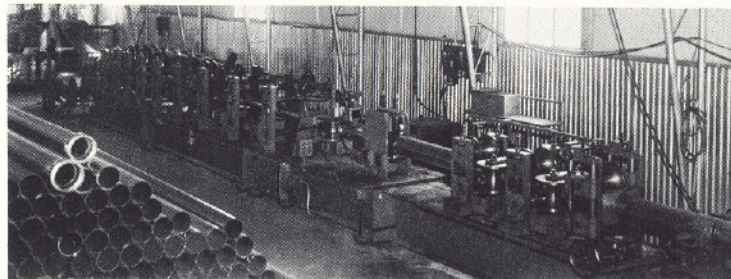
Line-Breaker



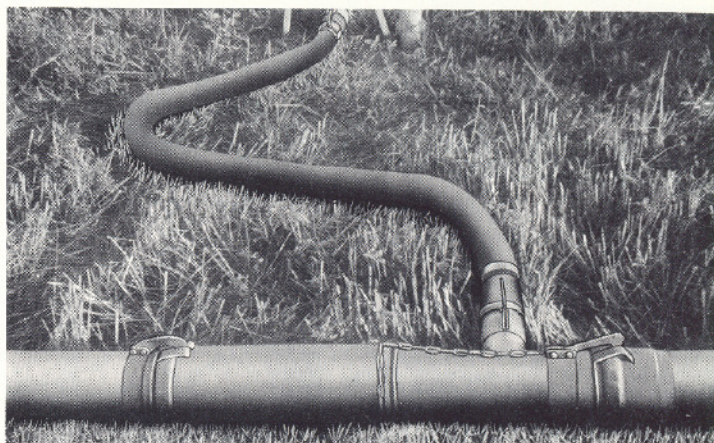
Reducer

### TUBING

With our modern aluminum tube mills and our many years of tow line production, we are able to fabricate the perfect tubing required for towing.



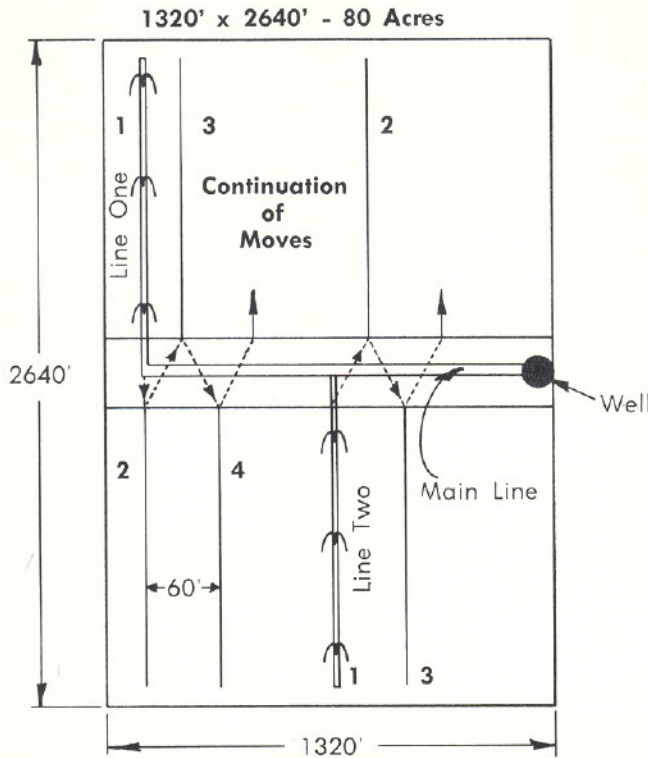
To cut your labor and time to a minimum, the mainline can be laid in a small ditch just below the surface allowing the tractor tow line to run over the mainline without damage.



Line Breaker and Flexible Hose



# Lindsay Systems Break The Price Barrier



## Typical Tow Line Layout

40 Ft. Sprinkler Spacing  
60 Ft. Lateral Moves

Materials Needed for Standard Quarter-Mile  
4" or 5" Tow Line

(for use on row crops)

- 32 pcs. 40' lengths (one length from end) 1280
- 30 pcs. LINDSAY "Quick-tach" couplers
- 33 pcs. light steel risers
- 33 pcs. Sprinkling heads (plastic or brass)
- 3 pcs. Tall and wide stabilizers (any row width or any height)
- 2 pcs. End shut off valves
- 2 pcs. End hitch tow plugs
- 2 sets of tri-pods

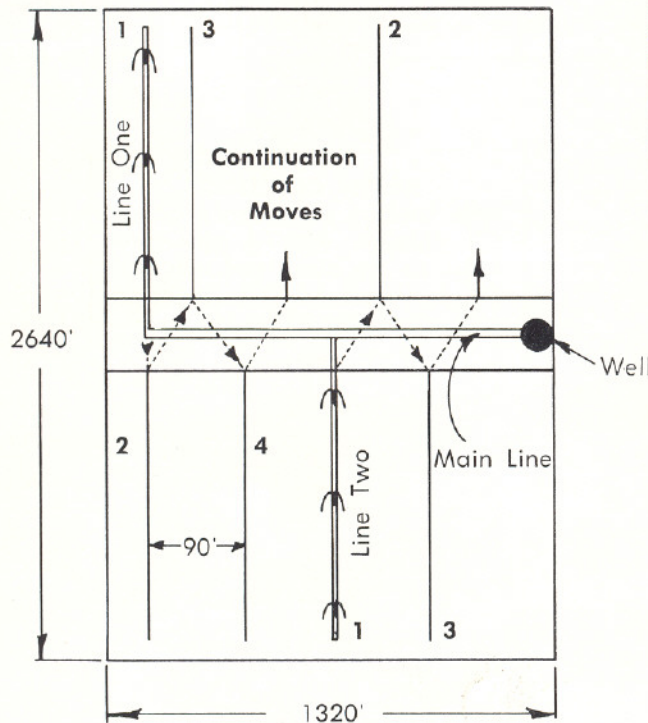
APPROXIMATE ACRES COVERED PER SET: 2

TOTAL PULL STRIPS: 21 per 80 Acres

RECOMMENDED MOVES:

**Choice 1.** Every 12 hours

**Choice 2.** Every 24 hours



## Big Red Tow Line Layout

80 Ft. Sprinkler Spacing  
90 Ft. Lateral Moves

Materials Needed for BIG RED Quarter-Mile  
4" or 5" Tow Line

(for use on row crops)

- 32 pcs. 40' lengths (one length from end) 1280
- 30 pcs. LINDSAY "Quick-tach" couplers
- 17 pcs. light steel risers
- 17 pcs. Sprinkling heads (brass)
- 3 pcs. Tall and wide stabilizers (any row width or any height)
- 2 pcs. End shut off valves
- 2 pcs. End hitch tow plugs
- 2 sets of tri-pods
- 16 1" plugs

APPROXIMATE ACRES COVERED PER SET: 3

TOTAL PULL STRIPS: 14 per 80 Acres

RECOMMENDED MOVES:

**Choice 1.** Every 24 hours

**Choice 2.** 1st time over every 24 hours for 1st & 2nd set, 12 hours for 3rd & 4th sets, etc.; 2nd time over water 24 hours on sets that were watered 12 hours 1st time over, etc.

**Choice 3.** Every 12 hours

Manufactured by  
**SCHUMACHER IRRIGATION INC.**  
PLATTE CENTER, NEBRASKA 68635  
Phones: (402) 246-3685 or (402) 246-4115