

Since 1956

# SCHUMACHER

IRRIGATION, INC.

Irrigation & Liquid Handling Solutions

## Schumacher-Rovatti PTO Pumps

These rugged, high performance power-take-off (PTO) irrigation pumps are inexpensive and designed for easy mobility. Their unique water-cooled gearbox allows the gearbox oil to be kept at a constant low temperature which reduces gasket damage due to high oil temperatures.

The heavy-duty pump frame and dynamically balanced impeller is made of durable cast iron. A graphic rope packing seal provides shaft lubrication. A heavy-duty, bowed axle 2-wheel cart allows for easy mobility. Standard pump discharge is horizontal, but can be rotated vertically. 540 & 1000 rpm models are available.



**T Series Single-Stage Pump**

**Features:**

- Unique water-cooled gearbox
- Two-wheel cart for easy positioning / transportation
- Oversized bearings
- Replaceable wear ring

\*Important: Pump gearbox is shipped without oil. Fill with 90 weight oil prior to using.

**PTO Pump Performance Table:**

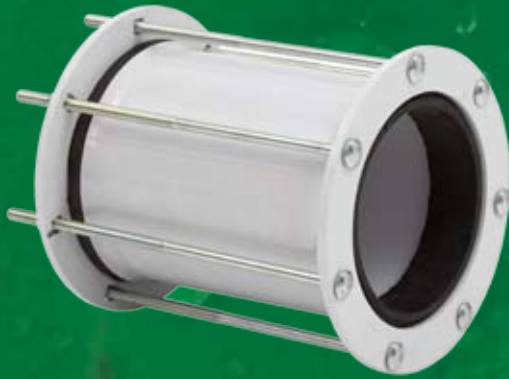
Model	GPM	25	50	70	80	90	100	120	130	160	190	210	240	260	330	400	460	530	660	790	920	1060	Suction	Discharge		
*T0F-50	PSI	76	76	76	75	74	73	72	69														2"	2"		
	HP	9	9	9	9	9	9	9	9																	
T1-40-E	PSI		150	149	148	147	145	143	140															2-1/2"	1-1/2"	
	HP		13	14	15	16	18	19	20																	
T2-40-E	PSI		182	181	181	180	179	178	176																2-1/2"	1-1/2"
	HP		21	22	24	26	28	29	31																	
T1-65A-E	PSI						88	88	88	88	87	85	83	80										2-1/2"	2"	
	HP						12	13	13	14	16	17	18	19												
T1-50-E	PSI						129	129	129	128	127	125	122	119										2-1/2"	2"	
	HP						19	20	21	23	25	26	28	29												
T2-50-E	PSI						149	149	149	148	147	145	143	141	125									2-1/2"	2"	
	HP						24	25	26	28	30	32	33	35	39											
T2-65-E	PSI						159	158	157	153	146	135												2-1/2"	2"	
	HP						24	25	27	30	32	35														
T2-80-E	PSI									101	101	101	100	100	97	93	86							3"	2-1/2"	
	HP									18	20	21	22	24	27	29	32									
T2-85-E	PSI									120	120	120	120	119	118	115	110	102						3"	2-1/2"	
	HP									25	26	28	30	32	35	39	41	43								
T3-80A-E	PSI									175	175	175	175	175	173	170	165							3"	2-1/2"	
	HP									38	40	42	44	46	53	60	66									
T3-100A-E	PSI													111	111	109	107	104	94	85				4"	3"	
	HP													33	36	39	43	46	51	55						
T3-110-E	PSI													134	133	133	132	131	128	121	108			4"	3"	
	HP													46	50	55	59	63	70	77	83					
T4-100-E	PSI													181	180	180	178	175	166	143				4"	3"	
	HP													61	66	70	74	79	90	96						
T4-125-E	PSI																	125	124	122	118	110		5"	4"	
	HP																	65	72	79	85	90				
	GPM	25	50	70	80	90	100	120	130	160	190	210	240	260	330	400	460	530	660	790	920	1060				

### Basic Units Include:

- Pump
- Drive Shaft
- Two-Wheel Cart
- Weld-on Flanges
- Gaskets
- Nuts & Bolts
- Instruction Manual

### Fully Fitted Units Additionally Include:

- Screen/Foot Valve
- Aluminum Suction Pipe
- Dresser Coupler
- Suction Adapter
- Discharge Priming Valve
- Discharge Adapter
- Pressure Gauge
- Hand Primer
- Primer Hose Kit



**Dresser Coupler**



**Foot Valve**



**Suction Adapter**



**Discharge Adapter**